



REGIONAL SPECIALISED METEOROLOGICAL CENTRE-TROPICAL CYCLONES, NEW DELHI
TROPICAL WEATHER OUTLOOK

DEMS-RSMC SPECIAL TROPICAL CYCLONES NEW DELHI DATED 24.03.2022

TROPICAL WEATHER OUTLOOK FOR NORTH INDIAN OCEAN (THE BAY OF BENGAL AND ARABIAN SEA) VALID FOR NEXT 120 HOURS ISSUED AT 0600 UTC OF 24.03.2022 BASED ON 0300 UTC OF 24.03.2022.

BAY OF BENGAL:

YESTERDAY'S WELL MARKED LOW PRESSURE AREA OVER MYANMAR FURTHER WEAKENED INTO A LOW PRESSURE AREA OVER THE SAME REGION AT 0900 UTC OF 23RD MARCH AND BECAME LESS MARKED AT 0000 UTC OF 24TH MARCH 2022.

SCATTERED LOW AND MEDIUM CLOUDS WITH EMBEDDED INTENSE TO VERY INTENSE CONVECTION OVER SOUTH ANDAMAN SEA AND MODERATE TO INTENSE CONVECTION OVER SOUTHEAST BAY OF BENGAL NORTH ANDAMAN SEA GULF OF MARTABAN. SCATTERED LOW AND MEDIUM CLOUDS WITH EMBEDDED WEAK CONVECTION OVER NORTHWEST & WESTCENTRAL BAY OF BENGAL OFF SOUTH ODISHA-ANDHRA PRADESH COASTS AND EASTCENTRAL BAY OF BENGAL. SCATTERED LOW AND MEDIUM CLOUDS OVER SOUTHWEST BAY OF BENGAL.

PROBABILITY OF CYCLOGENESIS (FORMATION OF DEPRESSION) DURING NEXT 120 HRS:

24 HOURS	24-48 HOURS	48-72 HOURS	72-96 HOURS	96-120 HOURS
NIL	NIL	NIL	NIL	NIL

ARABIAN SEA:

SCATTERED TO BROKEN LOW AND MEDIUM CLOUDS WITH EMBEDDED MODERATE TO INTENSE CONVECTION OVER EASTCENTRAL ARABIAN SEA OFF KARNATAKA COAST. SCATTERED LOW AND MEDIUM CLOUDS WITH EMBEDDED WEAK TO MODERATE CONVECTION OVER REST OF EAST ARABIAN SEA AND GULF OF CAMBAY. SCATTERED LOW AND MEDIUM CLOUDS OVER SOUTHWEST ARABIAN SEA.

PROBABILITY OF CYCLOGENESIS (FORMATION OF DEPRESSION) DURING NEXT 120 HRS:

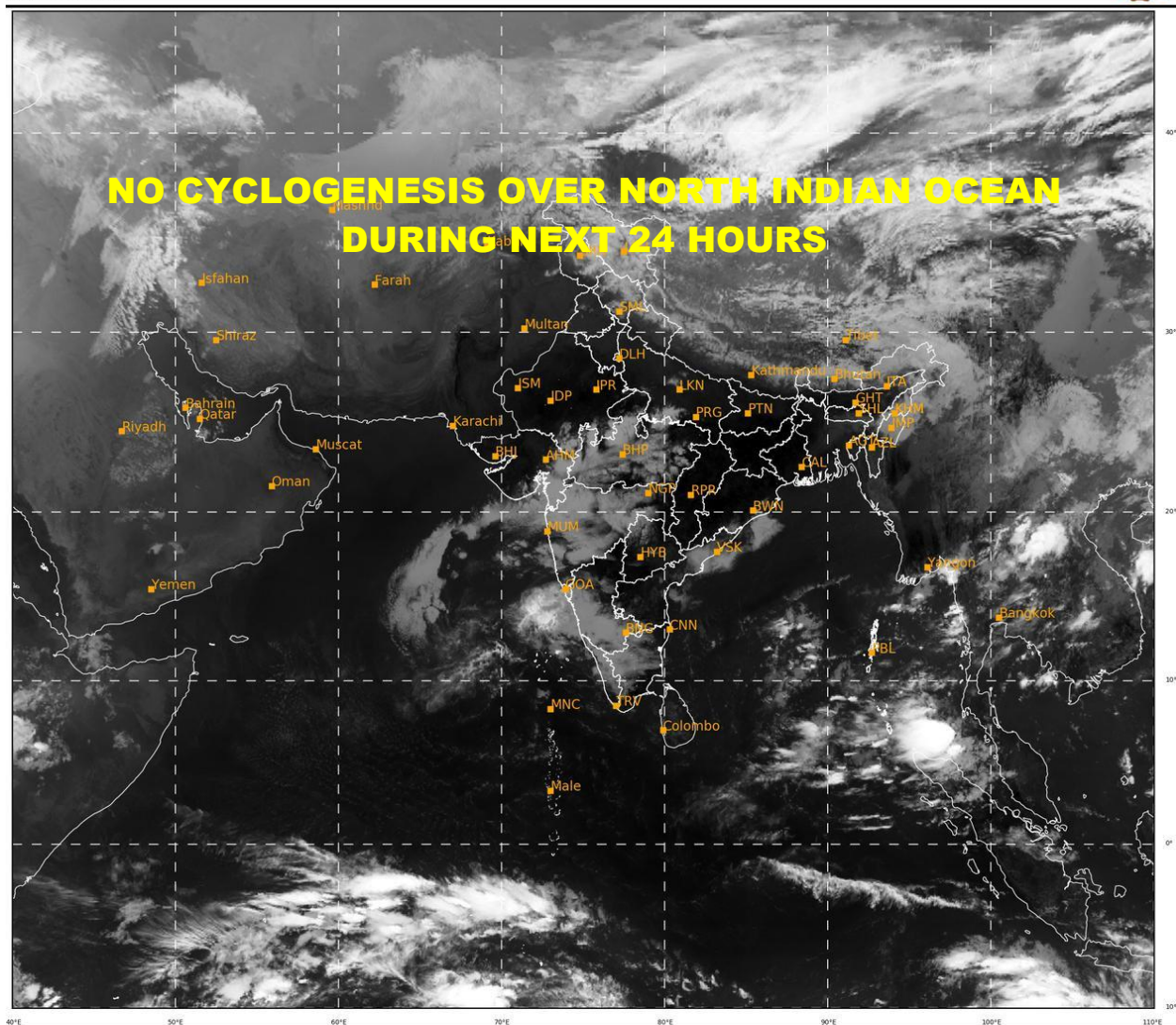
24 HOURS	24-48 HOURS	48-72 HOURS	72-96 HOURS	96-120 HOURS
NIL	NIL	NIL	NIL	NIL

REMARKS:

NIL.

SAT : INSAT-3D IMG
IMG_TIR1 10.8 um
L1C Mercator

24-03-2022/(0300 to 0326) GMT
24-03-2022/(0830 to 0856) IST



461

928

IMD, DELHI